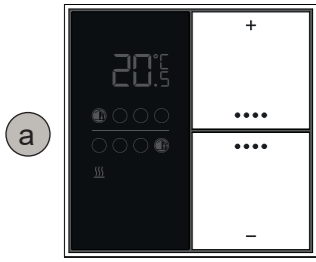
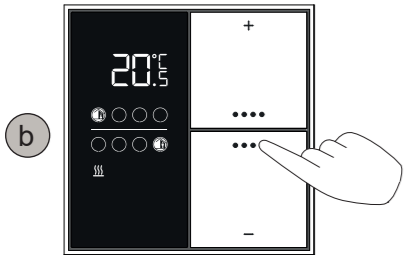


Attivazione del display
Activating the display

Display in condizione di risparmio energetico
Display in energy-saving mode



Riattiva la luminosità del display (qualsiasi tasto)
Reactivate the display brightness (any rocker)

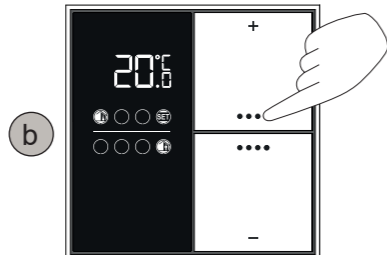


Visualizzazione informazioni
Displaying the information

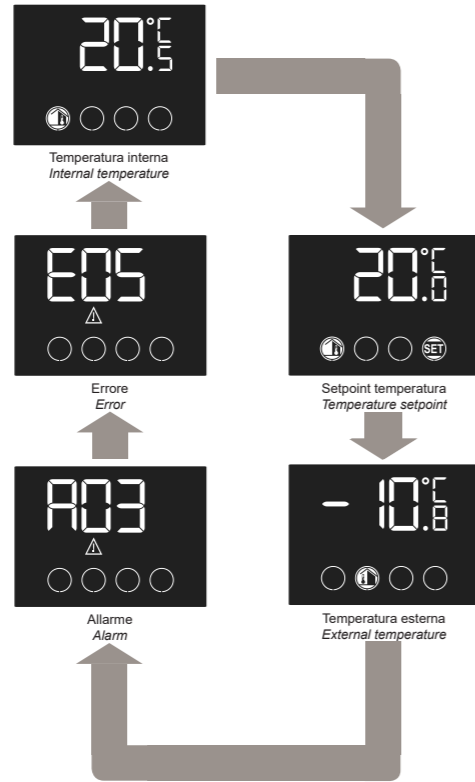
Attiva la sequenza di informazioni
Recall the information sequence



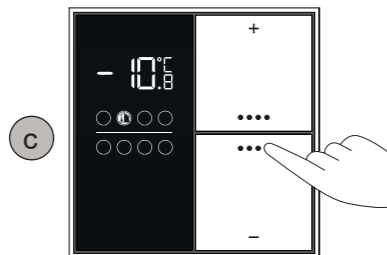
Passa all'informazione successiva
Move to the next information



Informazioni visualizzabili (dipendono da versione e impianto bus)
Displayable information (depend on version and bus system)

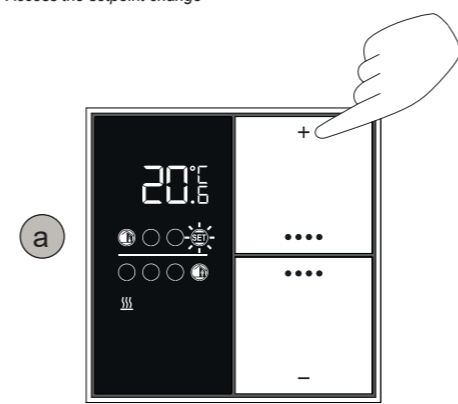


Esci dalla sequenza informazioni
Exit the information sequence

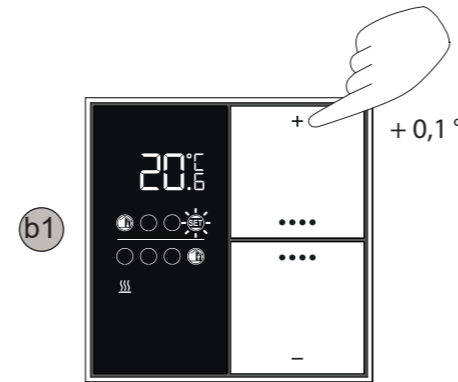


Modifica del setpoint temperatura
Changing the temperature setpoint

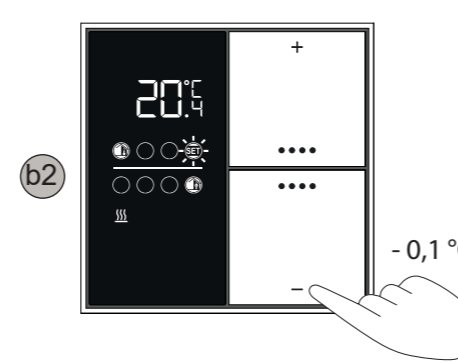
Accedi alla modifica del setpoint
Access the setpoint change



Aumenta il setpoint di temperatura
Increase the temperature setpoint



Diminuisci il setpoint di temperatura
Decrease the temperature setpoint

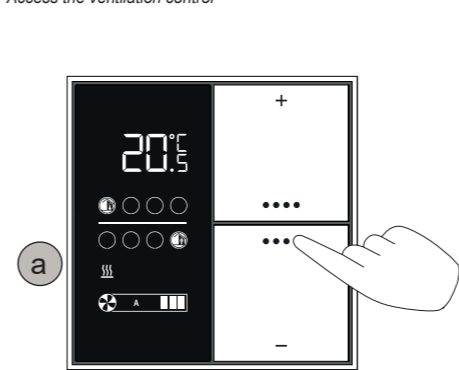


La modifica del setpoint è confermata dopo un'attesa di alcuni secondi (intervallo configurabile dall'installatore tra 2 e 12 secondi)
The setpoint change is automatically confirmed after some seconds (the timeframe is configurable by the commission between 2 and 12 seconds)

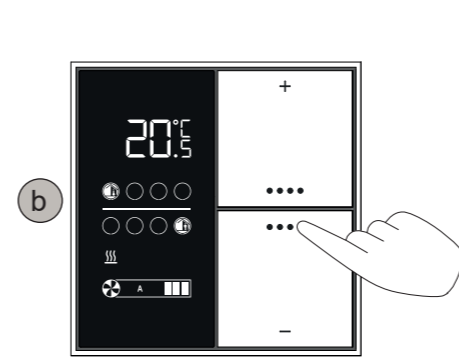


Controllo della ventilazione
Controlling the ventilation

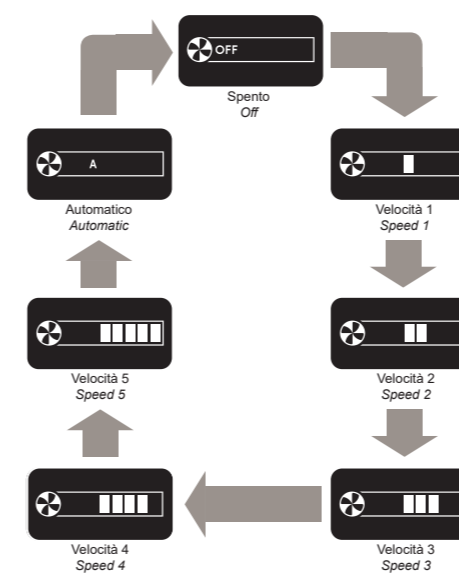
Accedi al controllo ventilazione
Access the ventilation control



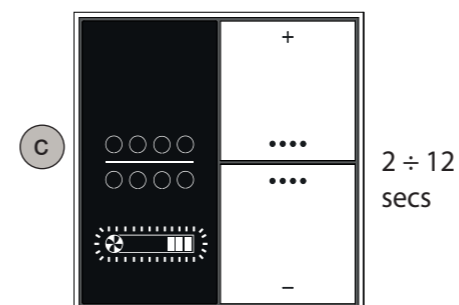
Seleziona il funzionamento desiderato
Select the operation desired



Opzioni di controllo ventilazione
Options for ventilation control

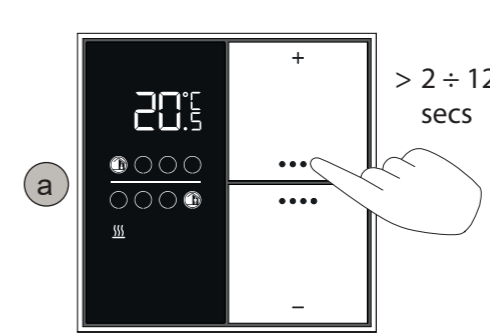


La modifica del funzionamento è confermata dopo un'attesa di alcuni secondi (intervallo configurabile dall'installatore tra 2 e 12 secondi)
The operation setting is automatically confirmed after some seconds (the timeframe is configurable by the commission between 2 and 12 seconds)

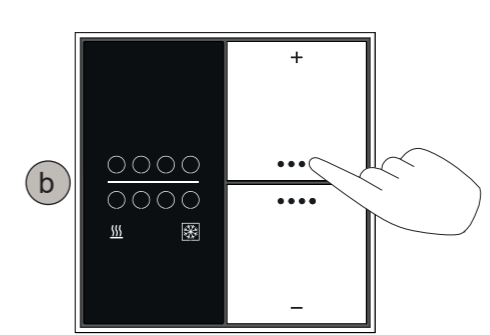


Commutazione riscaldamento/raffreddamento
Heating / cooling changeover

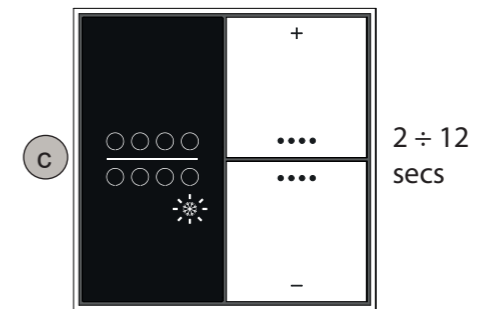
Accedi alla commutazione stagionale
Access the seasonal changeover



Seleziona riscaldamento o raffreddamento
Select heating or cooling



La modifica del modo selezionato è confermata dopo un'attesa di alcuni secondi (intervallo configurabile dall'installatore tra 2 e 12 secondi)
The mode change is automatically confirmed after some seconds (the timeframe is configurable by the commission between 2 and 12 seconds)



Termostato ambiente Easy con display LCD

Codici: EK-ER2-TP..



Guida rapida



Importante. La presente guida rapida deve essere consegnata al cliente finale insieme alla documentazione di progetto.

EKINEX S.p.A.
Via Novara 37
I-28010 Vaprio d'Agogna (NO), Italia
Tel. +39 0321 1828980
info@ekinex.com
www.ekinex.com

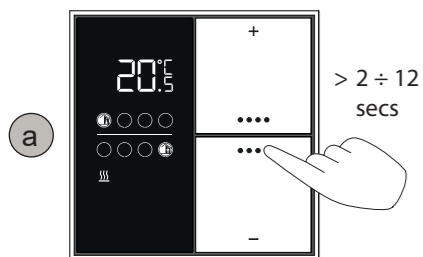
FISPER2PIEGU0

Allarme	Causa
A01	Superamento temperatura superficiale
A02	Formazione condensa
A03	Allarme blocco caldaia

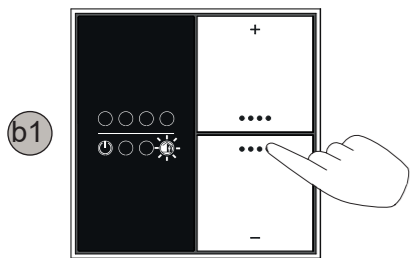
Errore	Causa
E00	Sensore temperatura integrato guasto
E06	Ingresso 1: sonda NTC generica guasta
E07	Ingresso 1: sonda temperatura ambiente guasta
E08	Ingresso 1: sonda temp. di mandata fan-coil guasta
E09	Ingresso 1: sonda temp. superficiale pavimento guasta
E10	Ingresso 1: sonda temperatura esterna guasta
E11	Ingresso 1: sonda antistratificazione guasta
E14	Ingresso 2: sonda NTC generica guasta
E15	Ingresso 2: sonda temperatura ambiente guasta
E16	Ingresso 2: sonda temp. di mandata fan-coil guasta
E17	Ingresso 2: sonda temp. superficiale pavimento guasta
E18	Ingresso 2: sonda temperatura esterna guasta
E19	Ingresso 2: sonda antistratificazione guasta
E23	Sensore temperatura esterna guasto
E24	Sensore temperatura ambiente aggiunta guasto
E25	Sensore temperatura mandata fan-coil guasto
E26	Sensore temperatura superficiale pavimento guasto
E27	Sensore temperatura di mandata impianto guasto
E29	Sensore temperatura antistratificazione guasto
E34	Timeout sensore temperatura esterna
E35	Timeout sensore temperatura ambiente aggiunta
E36	Timeout sensore temperatura mandata fan-coil
E37	Timeout sensore temperatura superficiale pavimento
E38	Timeout sensore temperatura di mandata impianto
E40	Timeout sensore temperatura antistratificazione
E41	Timeout sensore anticondensa
E42	Timeout contatto finestra 1
E43	Timeout contatto finestra 2
E46	Timeout contatto tasca porta tessera
F01	Allarme 1 da bus:
F02	Allarme 2 da bus:
F03	Allarme 3 da bus:
F04	Allarme 4 da bus:

Attivazione e spegnimento
Switch ON and OFF

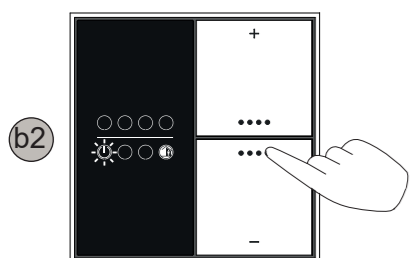
Accedi alla commutazione tra attivazione e spegnimento
Access the ON-OFF switching



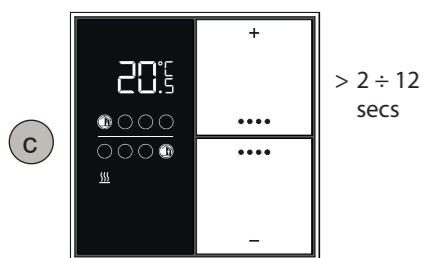
Commutazione su attivazione
Switch ON



Commutazione su spegnimento
Switch OFF

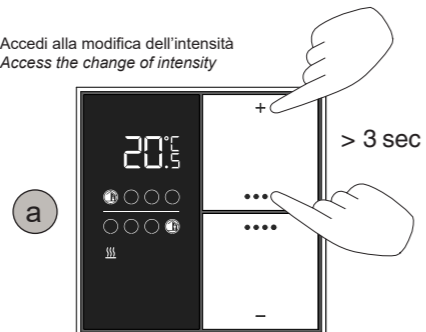


La modifica è confermata dopo un'attesa di alcuni secondi (intervallo configurabile dall'installatore tra 2 e 12 secondi)
The settings change is automatically confirmed after some seconds (the timeframe is configurable by the commissione between 2 and 12 seconds)

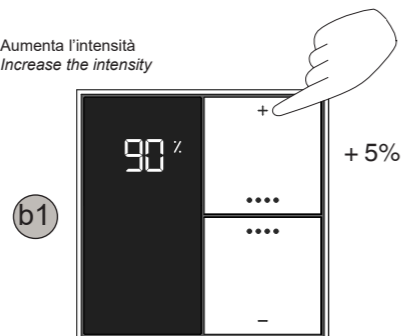


Modifica intensità retroilluminazione
Changing the backlight intensity

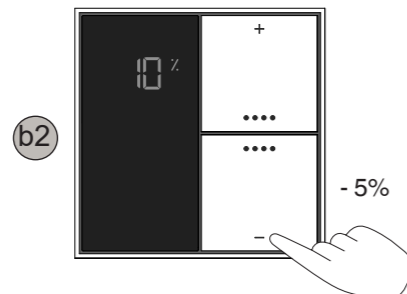
Accedi alla modifica dell'intensità
Access the change of intensity



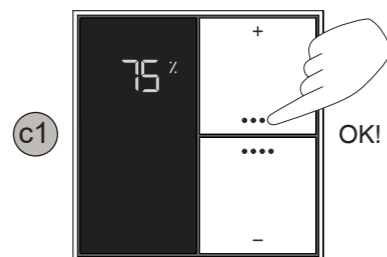
Aumenta l'intensità
Increase the intensity



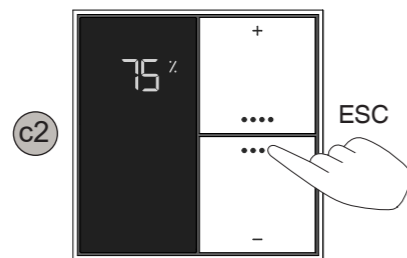
Diminuisci l'intensità
Decrease the intensity



Conferma l'intensità impostata
Confirm the intensity setting

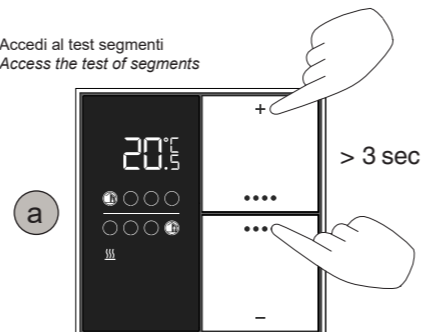


Esci senza memorizzare la modifica
Exit without saving the change

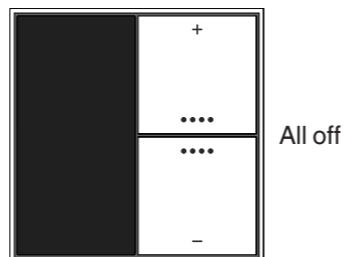


Test dei segmenti display
Testing the display segments

Accedi al test segmenti
Access the test of segments



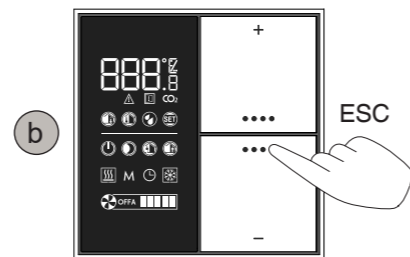
Tutti i segmenti spenti (ca. 2 secondi)
All segments off (approx. 2 seconds)



Tutti i segmenti accesi (ca. 10 secondi)
All segments on (approx. 10 seconds)



Termina anticipatamente il test segmenti
End in advance the test of segments



Easy room temperature controller with LC-display

Codes: EK-ER2-TP...



EK-ER2...

! Important. The present quick guide must be delivered to the end user with the project documentation.

EKINEX S.p.A.

Via Novara 37
I-28010 Vaprio d'Agogna (NO), Italia
Tel. +39 0321 1828980
info@ekinex.com
www.ekinex.com

FISPER2PIEGUO

Alarm	Cause
A01	Surface temperature limit exceeded
A02	Formation of condensation
A03	Thermal generator lock

Error	Cause
E00	Integrated temperature sensor fault
E06	Input 1: NTC sensor fault
E07	Input 1: room temperature sensor fault
E08	Input 1: fan-coil temperature sensor fault
E09	Input 1: surface temperature sensor fault
E10	Input 1: external temperature sensor fault
E11	Input 1: anticondensation sensor fault
E14	Input 2: NTC sensor fault
E15	Input 2: room temperature sensor fault
E16	Input 2: fan-coil temperature sensor fault
E17	Input 2: surface temperature sensor fault
E18	Input 2: external temperature sensor fault
E19	Input 2: anticondensation sensor fault
E23	External temperature sensor fault
E24	Room temperature sensor fault
E25	Fan-coil temperature sensor fault
E26	Surface temperature sensor fault
E27	Flow temperature sensor fault
E29	Antistratification temperature sensor fault
E34	External temperature sensor timeout
E35	Room temperature sensor timeout
E36	Fan-coil temperature sensor timeout
E37	Surface temperature sensor timeout
E38	Flow temperature sensor timeout
E40	Antistratification temperature sensor timeout
E41	Anticondensation sensor timeout
E42	Window contact 1 timeout
E43	Window contact 2 timeout
E46	Card holder contact timeout
F01	Alarm 1 from bus
F02	Alarm 2 from bus
F03	Alarm 3 from bus
F04	Alarm 4 from bus